

# Together We Can Make a Difference



Become part of the Alliance's **Birth Parent National Network (BPNN)**, a national network of hundreds of birth parents and organizations working together to strengthen families, communities and systems by engaging the voices of parents. Participate in quarterly webinars and an annual virtual convening. There is no charge to join.



[ctfalliance.org/partnering-with-parents/bpnn](http://ctfalliance.org/partnering-with-parents/bpnn)

## KNOWLEDGE

- Policies, practices and funding streams for strengthening families and communities
- New ways to partner with parents and work with systems
- The protective factors framework
- Using data to strengthen your community

## RESOURCES

- Online library of prevention strategies and child welfare systems reform efforts
- Free virtual trainings on multiple relevant topics
- Publications developed from a parent perspective
- Compendium of parent partnership organizations

## LEADERSHIP

- Serve on BPNN Parent Council
- Co-facilitate BPNN webinars
- Represent BPNN at conferences and trainings
- Develop policies, practices and recommendations that help strengthen and support families and communities
- Create publications and tools
- Testify at Congressional hearings
- Serve as a resource to policymakers to share your perspective

## CONNECTIONS

- Peers from across the nation
- Local, state and national organizations
- National leaders who promote parents as partners in policy and practices that affect children and families

## SUCCESS

- Working as a unified parent voice to lead change
- Holding leadership roles at the local, state and national levels
- Working in partnership with staff to improve policies and practices
- Supporting strong and resilient families and communities through implementation of prevention strategies
- Universal acceptance of the importance of protective factors for all families

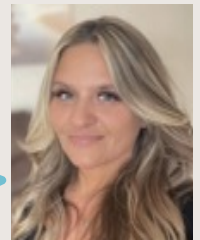


Leadership in the BPNN equips parents with the strength to influence impactful decisions, fostering a future where all families are valued and supported.

**Churmell Mitchell,**  
BPNN member from Alabama

The BPNN is a place where we all can come from different worlds and all fit in! A place where the heart is the core of all we do.

**Jody Rodgers,**  
BPNN member from California



The Children's Trust Fund Alliance is the national membership organization for state children's trust funds. Since 2006, the Alliance has also developed and partnered with networks of parents to elevate their voices to decision-makers and to join

with them in identifying policies and practices that best support children and families. The Alliance's Birth Parent National Network promotes and champions birth parents as leaders and strategic partners in prevention and systems reform.

# 2024

## JANUARY

SUN	MON	TUE	WED	THU	FRI	SAT
	1	2	3	4	5	6
7	8	9	10	11	12	13
14	15	16	17	18	19	20
21	22	23	24	25	26	27
28	29	30	31			

## MARCH

SUN	MON	TUE	WED	THU	FRI	SAT
					1	2
3	4	5	6	7	8	9
10	11	12	13	14	15	16
17	18	19	20	21	22	23
24	25	26	27	28	29	30
31						

## MAY

SUN	MON	TUE	WED	THU	FRI	SAT
			1	2	3	4
5	6	7	8	9	10	11
12	13	14	15	16	17	18
19	20	21	22	23	24	25
26	27	28	29	30	31	

## JULY

SUN	MON	TUE	WED	THU	FRI	SAT
	1	2	3	4	5	6
7	8	9	10	11	12	13
14	15	16	17	18	19	20
21	22	23	24	25	26	27
28	29	30	31			

## SEPTEMBER

SUN	MON	TUE	WED	THU	FRI	SAT
1	2	3	4	5	6	7
8	9	10	11	12	13	14
15	16	17	18	19	20	21
22	23	24	25	26	27	28
29	30					

## NOVEMBER

SUN	MON	TUE	WED	THU	FRI	SAT
					1	2
3	4	5	6	7	8	9
10	11	12	13	14	15	16
17	18	19	20	21	22	23
24	25	26	27	28	29	30

## FEBRUARY

SUN	MON	TUE	WED	THU	FRI	SAT
				1	2	3
4	5	6	7	8	9	10
11	12	13	14	15	16	17
18	19	20	21	22	23	24
25	26	27	28	29		

## APRIL

SUN	MON	TUE	WED	THU	FRI	SAT
	1	2	3	4	5	6
7	8	9	10	11	12	13
14	15	16	17	18	19	20
21	22	23	24	25	26	27
28	29	30				

## JUNE

SUN	MON	TUE	WED	THU	FRI	SAT
						1
2	3	4	5	6	7	8
9	10	11	12	13	14	15
16	17	18	19	20	21	22
23	24	25	26	27	28	29
30						

## AUGUST

SUN	MON	TUE	WED	THU	FRI	SAT
				1	2	3
4	5	6	7	8	9	10
11	12	13	14	15	16	17
18	19	20	21	22	23	24
25	26	27	28	29	30	31

## OCTOBER

SUN	MON	TUE	WED	THU	FRI	SAT
		1	2	3	4	5
6	7	8	9	10	11	12
13	14	15	16	17	18	19
20	21	22	23	24	25	26
27	28	29	30	31		

## DECEMBER

SUN	MON	TUE	WED	THU	FRI	SAT
						1
2	3	4	5	6	7	8
9	10	11	12	13	14	15
16	17	18	19	20	21	22
23	24	25	26	27	28	29
30	31					



Birth Parent National Network (BPNN)

# SAVE the DATES!

BPNN members – parents and organizational leaders – will guide us through interactive quarterly webinars. Save these dates and join us for policy discussions and developments affecting children and families.

## Quarterly Webinars

Thursday, February 29, 2024

Thursday, April 11, 2024

Thursday, August 8, 2024

Thursday, October 10, 2024

2:00pm - 3:30pm ET

1:00p. - 2:30pm CT

12:00 pm - 1:30pm MT

11:00am -12:30pm PT

## Questions?

Email [info@ctfalliance.org](mailto:info@ctfalliance.org)

Register Online

[ctfalliance.org/partnering-with-parents/bpnn](https://ctfalliance.org/partnering-with-parents/bpnn)

Children's Trust Fund Alliance is partnering with Casey Family Programs to support the BPNN.