

*Spotlight on Housing:  
Creative Solutions for Families  
BPNN Quarterly Call  
August 8, 2024*



**WELCOME**

Please share your name, state,  
and role in the chat box



## Welcome



**Churmell Mitchell**  
BPNN Member  
Alabama



**Jody Rodgers**  
BPNN Member  
California



**Kara Georgi**  
Lead Senior Associate of  
Parent Partnerships  
Children's Trust Fund Alliance



## Agenda

- Welcome
- Policy Updates
- Questions and Answers
- Panel Discussion on Housing with Edwin Daye and Kimberly Mays
- Resources
- Evaluation



# Public Policy Update



**Emily Hecht-McGowan**  
Public Policy Director  
Casey Family Programs

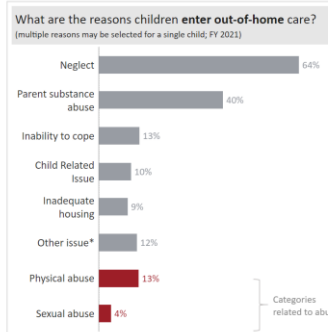
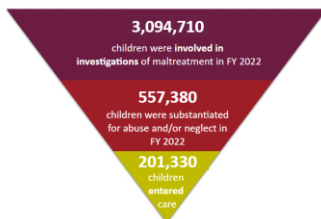


## Data

### Child Welfare Data | National

prepared by Casey Family Programs, data advocacy team  
source: Public AFCARS & NCANDS obtained from NDACAN

In 2022, the United States was home to 65,944,900 children.  
In 2022, there were at least 1,955 child maltreatment fatalities in the United States.



## Available Housing Resources

- Vouchers
  - Family Unification Program (FUP)
  - Foster Youth Independence Initiative (FYI)
- Title IV-B Family Preservation Funds
- Community-Based Child Abuse Prevention funds (CBCAP)
- Family First – IV-E Flexibilities
- Medicaid Waivers
- Continuum of Care (CoC)/Emergency Solutions Grants (ESG)

## Supportive Housing

To holistically meet the needs of

- 1) homeless or precariously housed families involved with, or at risk of involvement with, the child welfare system; and
- 2) those for whom inadequate housing is a barrier to reunification.

Key Components

- Minimal Barriers
- Permanent & Affordable
- Personal Voice & Choice
- Wraparound Services

## Recent Developments

- Congress
  - ???
- Federal Agencies
  - Interagency Council on Homelessness - Federal Strategic Plan
  - HUD Awards
- States
  - National Governors Association
  - Case Studies



QUESTIONS

# Housing Panelists



**Edwin Daye**

Birth Parent National Network  
Member and BPAC Co-Facilitator  
Iowa



**Kimberly Mays**

Birth Parent National Network  
Member and BPAC Member  
Washington



**"Looking for a Hand-Up?"**

**GOD'S HAND UP RECOVERY HOUSING** (OWNERS: CEDRIC ARMSTRONG)



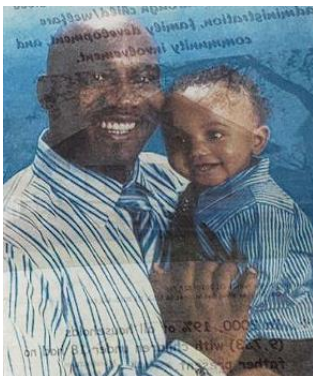
Serving Families in: Tacoma, WA  
Spanaway, WA, Lakewood, WA and  
Parkland, WA



## Love and Family

## Patron's House

- A structured residence for fathers and families to reside in on a temporary, transitional bases (6-12 months) as they undergo the DHS/Court-ordered process and programs to gain or regain custody of their children. It is also the purpose of this house to allow and assist fathers in becoming self-sufficient, rehabilitated, employable, and creditworthy citizens while residing in this house
- **Mission:** Patron's Hands facilitates coordinated approaches to integrating social support services, employment/workplace training programs, educational assistance, transitional housing accommodations and market guidance for single fathers and disadvantaged families of Central Iowa.



# QUESTIONS

## GREAT RESOURCES

**RESEARCH FROM THE FIELD** JOURNAL ARTICLE SUMMARY

### Is there an association between home evictions and child welfare engagement?

Sara S. Bowen D. A. Coakley S. Madani S. A. O'Quinn R. (2022). Are home evictions associated with child welfare system engagement? *Child Abuse and Neglect*, 121(1), 1053-1063. doi:10.1016/j.chabu.2021.105317

**What can we learn from this study?**  
 Research suggests that housing instability increases the risk of child abuse and neglect. Families with low income that struggle to meet children's basic needs, such as housing, nutrition, and safety, are at a higher risk of child welfare involvement. This study examines the association between housing instability (eviction, homelessness, and child welfare system involvement) to understand the impact of evictions on the rate of foster care entries.

**Study details**

- Population: Children in counties of 100 states and the District of Columbia.
- Data sources: 2015-2018 National Child Abuse and Neglect Reporting System (NCARNS) data, 2015-2018 American Community Survey (ACS) data, and 2015-2018 Housing and Community Development Administration (HUD) data.
- Methodology: Box-cox standardized residuals. Data were analyzed using logistic regression models.
- Findings: Home evictions were associated with a 1.5% increase in foster care entries.

**Why is this important to our work?**  
 The study suggests that evictions, especially those of public housing, are associated with an increased risk of child abuse and neglect. Understanding the relationship between housing instability and child welfare involvement is important for developing and implementing effective interventions. Child welfare agencies need to work to address housing instability and provide families with safe and affordable housing, as well as other supportive services.

This summary paraphrases the findings from a single research report. It does not constitute a review of the literature. For additional information, see the full report at <https://doi.org/10.1016/j.chabu.2021.105317> and <https://www.ncbi.nlm.nih.gov/pmc/articles/PMC8811187/>.

Casey Family Programs | Learning

**SAFESTRONGSUPPORTIVE**

### How can families affected by substance use disorder safely stay together?

The first ever developed guidelines with **Casey and Family Programs**. The national information center on substance use disorders and co-occurring mental health conditions.

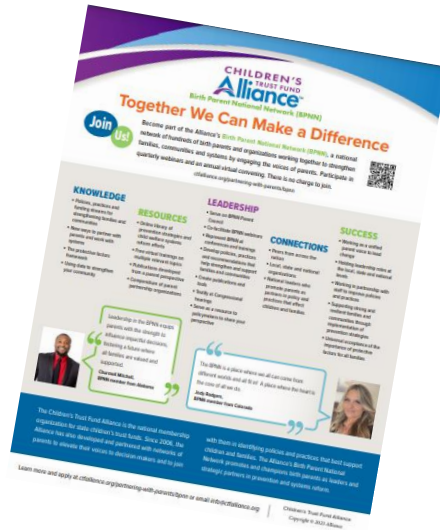
Substance use disorder is a chronic condition that affects millions of people in the United States. It can have a significant impact on the health and well-being of individuals and their families. This report provides guidance on how families affected by substance use disorder can safely stay together and support their loved ones. The report is based on research and best practices from Casey Family Programs and other organizations.

For additional information, see the full report at <https://www.casey.org/resources/safestrong-supportive>.

<https://www.casey.org/resources/>



# Join the BPNN!



# Save the Date

## Next Caring Conversation Monday, August 12

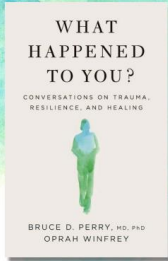
4pm ET • 3pm CT • 2pm MT • 1pm PT

# 2024 Book Club Check Ins

Join us for our book club check-ins in 2024!

Journey to Resilience: From Trauma to Healing

March 5th 2:00 pm–3:00 Eastern  
May 21st 2:00 pm–3:00 Eastern  
August 13th 2:00 pm–3:00 Eastern  
December 3 2:00 pm–3:00 Eastern



Learn more: <https://ctfalliance.org/partnering-with-parents/book-club/>



## August 13<sup>th</sup>

2pm ET/1pm CT/12pm MT/11am PT



# Family First Prevention Services Act



Want to ensure those most impacted by foster care — including youth, parents, and relative caregivers — have a say in how the system should improve?

Are you interested in working to strengthen families?

Would you like to connect with others who have lived experience with the foster care system?

You are invited you to join



## FAMILY VOICES UNITED

[familyvoicesunited.org](http://familyvoicesunited.org)



# Evaluation

<https://forms.gle/GZrDnTeUkfzuQhk86>



## BPNN Contact Information

**Meryl Levine,**  
**National Director of Parent Partnerships**  
 Children's Trust Fund Alliance  
 E-mail: [meryl.levine@ctfalliance.org](mailto:meryl.levine@ctfalliance.org)

**Teresa Rafael,**  
**Executive Director**  
 Children's Trust Fund Alliance  
 E-mail: [teresa.rafael@ctfalliance.org](mailto:teresa.rafael@ctfalliance.org)

**Kara Georgi,**  
**Lead Senior Associate of Parent Partnerships**  
 Children's Trust Fund Alliance  
 Telephone: 315-729-4866  
 E-mail: [kara.georgi@ctfalliance.org](mailto:kara.georgi@ctfalliance.org)

[ctfalliance.org](http://ctfalliance.org)

